

DATASHEET

Issue 1.0



Multifunction Meters

Transducers & Isolators

Temperature Controllers

Converters & Recorders

Digital Panel Meters

Current Transformers

Analogue Panel Meters

Shunts

Digital Multimeters

OMEGA 10 SPLIT CORE CURRENT TRANSFORMER SERIES



Omega 10 Series is a range of split core current transformers that offers a cost effective and efficient method by which the current can be measured without the need to break the conductor, thereby reducing installation and commissioning time.

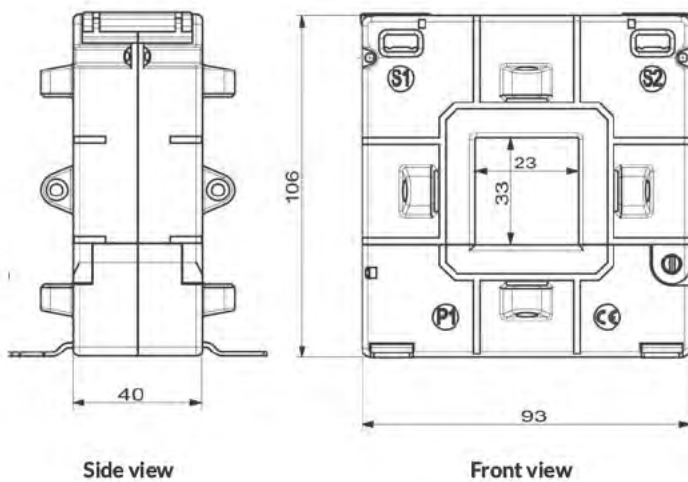
Specifications

• System voltage	720V (0.72kV) maximum
• Test voltage	3kV for 1 minute
• System frequency	50 or 60 Hz
• Insulation class	E
• Overload withstand	1.2 times rated current continuously
• Short circuit thermal	100 x rated primary for 1 second
• Operating temperature	20°C to 70°C
• Relative humidity	0-90% (non condensing)
• Compliant with	IEC 60044-1, Bs7626
• Accuracy	Class 3, 1 & 0.5
• Rated dynamic current	= 2.55 x 1ht
• Enclosure	Flame retardant grade classified UL 94V-O

Applications

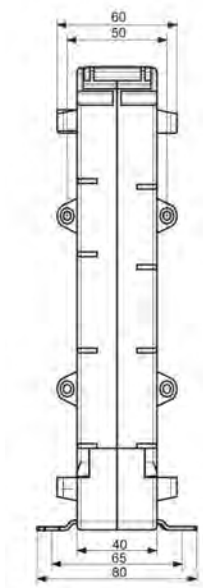
- Switchgear
- Distribution system
- Generator sets
- Control panels
- Over load protection
- Control devices

Omega 10A 93/30 SC (40)

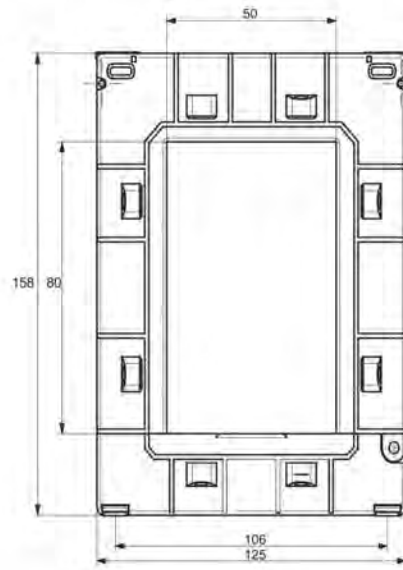


ALL DIMENSIONS ARE IN MM.

Series	Catalogue nbr. Suffix	Current Ratio	VA for + 1% Class
10A	100	100:5	1.5
	150	150:5	1.75
	200	200:5	2.5
	250	250:5	3.75
	300	300:5	5
	400	400:5	6.25

Omega 10B 125/50 SC (40)

Side view



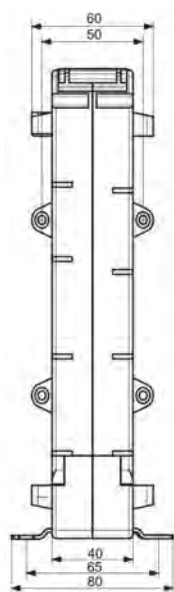
Front view



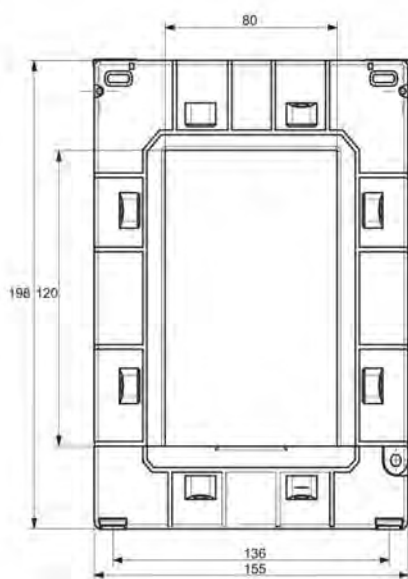
ALL DIMENSIONS ARE IN MM.

Series	Catalogue nbr. Suffix	Current Ratio	VA for + 1% Class
10B	250	250:5	2.5
	300	300:5	3.75
	400	400:5	3.75
	500	500:5	5
	600	600:5	7.5
	750	750:5	7.5
	800	800:5	10
	1000	1000:5	10
	1200	1200:5	15
	1250	1250:5	15
	1500	1500:5	15
	1600	1600:5	15

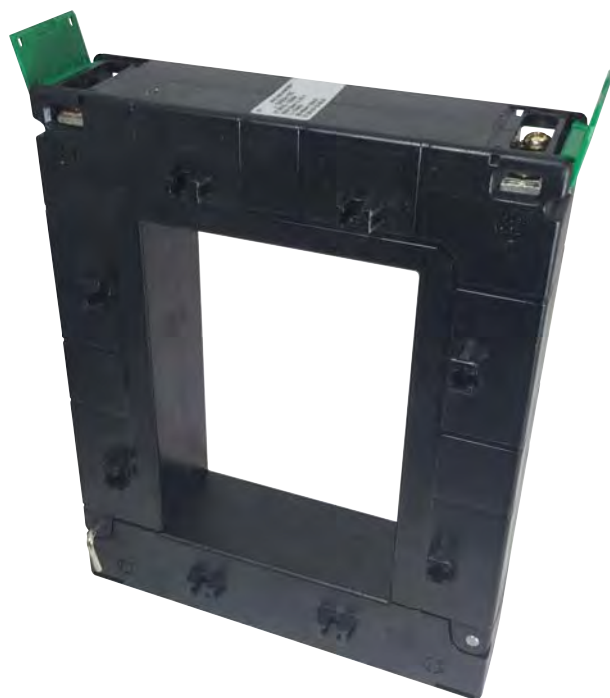
Omega 10C 155/80 SC (40)



Side view

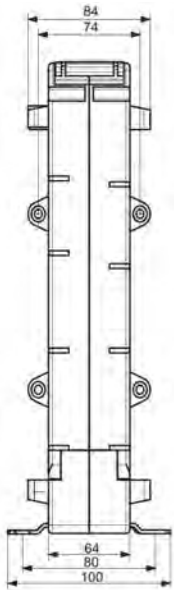


Front view

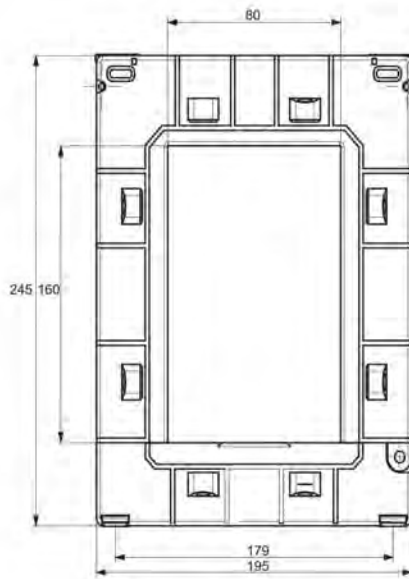


ALL DIMENSIONS ARE IN MM.

Series	Catalogue nbr. Suffix	Current Ratio	VA for + 1% Class
10C	250	250:5	2.5
	300	300:5	3.75
	400	400:5	3.75
	500	500:5	5
	600	600:5	7.5
	750	750:5	10
	800	800:5	10
	1000	1000:5	15
	1200	1200:5	30
	1250	1250:5	30
	1500	1500:5	45
	1600	1600:5	45
	2000	2000:5	45
	2500	2500:5	45
	3000	3000:5	45

Omega 10D 195/80 SC (40)

Side view

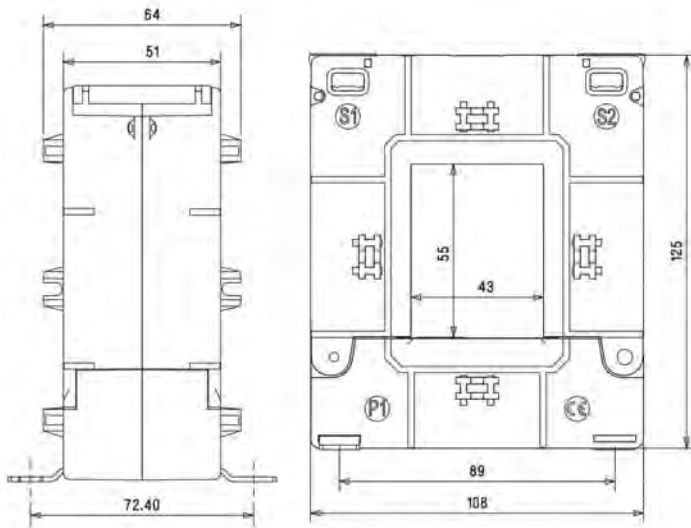


Front view



ALL DIMENSIONS ARE IN MM.

Series	Catalogue nbr. Suffix	Current Ratio	VA for + 1% Class
10D	500	500:5	5
	600	600:5	5
	750	750:5	10
	800	800:5	10
	1000	1000:5	20
	1200	1200:5	20
	1250	1250:5	20
	1500	1500:5	30
	1600	1600:5	30
	2000	2000:5	30
	2500	2500:5	30
	3000	3000:5	45
	4000	4000:5	45
	5000	5000:5	45

Omega 10E 105/50 SC (50)

Side view

Front view

ALL DIMENSIONS ARE IN MM.



Series	Catalogue nbr. Suffix	Current Ratio	VA for + 1% Class
10E	100	100:5	1.5
	125	125:5	1.5
	150	150:5	1.75
	200	200:5	3.75
	250	250:5	5
	300	300:5	5
	400	400:5	7.5
	500	500:5	7.5
	600	600:5	10
	750	750:5	12.5
	800	800:5	12.5